

Peau et toxicomanie

- Peu d'articles # 5 par an (case reports++)
- Dernière revue générale: Young 1965
- Pourtant problème très fréquent:
86% (Weidman...N Y State J Med 1971 ; 71 : 2643-6)

1. Complications aiguës

- locales
- loco-régionales

2. « » Chroniques

- locales
- Loco-régionales

3. Hypersensibilité

4. Infections systémiques

5. Manifestations toxiques

6. Psychiatriques



Del Giudice. Br J Dermatol 2004

Les complications aigües:



- 1. locales: au site d'injection**

« Injection marks »



Infections locales

**Cellulites et abcès
au site d'injection**

11% dans les 6 mois
(Vlahov)

incidence 33/100 pers-an
(Spjikerman)









Infection favorisée par:

- **Drogue contaminée: anaérobies telluriques, champignons, BGN (65% Tuazon...JID)**
- **Matériel contaminé (seringue, filtre...) (90% Tuazon...JID)**
- **Agents additionnels (quinine, caféine, lactose...)**
- **Solvant: eau du robinet, citron...**
- **Propriétés pharmacologiques des drogues (cocaïne)**

Infection favorisée par:

- Absence d'asepsie lors de l'injection
(léchage du site d'injection, de l'aiguille...)
- Hygiène générale nulle



<i>B. cereus</i>	55 (95)
<i>B. coagulans</i>	1 (2)
<i>B. licheniformis</i>	23 (40)
<i>B. laterosporus</i>	1 (2)
<i>B. pumilus</i>	5 (9)
<i>B. subtilis</i>	1 (2)
<i>Bacillus sp.*</i>	1 (2)

⇒ <i>C. perfringens</i>	2 (3)
⇒ <i>C. sordellii</i>	1 (2)
<i>C. tertium</i>	1 (2)



<i>P. macerans</i>	1 (2)
⇒ <i>S. aureus</i>	1 (2)
<i>S. capitis</i>	2 (3)
<i>S. epidermidis</i>	6 (10)
<i>S. haemolyticus</i>	1 (2)
<i>S. warneri</i>	13 (22)
<i>Staphylococcus sp.*</i>	1 (2)




McLauchlin...j med microbiol 2002
(épidémie de GB 2000)

	<i>Matériel</i> 68%	<i>Héroïne</i> 89%
• <i>Bacillus</i>	47	32
• <i>Staph coag neg</i>	32	19
• <i>Clostridium perf</i>	31	11
• <i>E.coli</i>	17	3
• <i>aspergillus</i>	3	26
•		

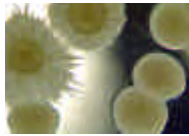
Tuazon...jid 1974



Quels germes?

polymicrobien



Staphylococcus aureus


Strepto A

Strepto non groupables

anaérobies (*Clostridium*)

BGN

Levures



Facteurs de risque d 'abcès post injection

Murphy...CID 2001

- **Injection intradermique directe (or: 3)**
- **Association héroïne-cocaïne (or: 1,2)**
- **Effet favorable de l 'antiseptie (or: 2)**

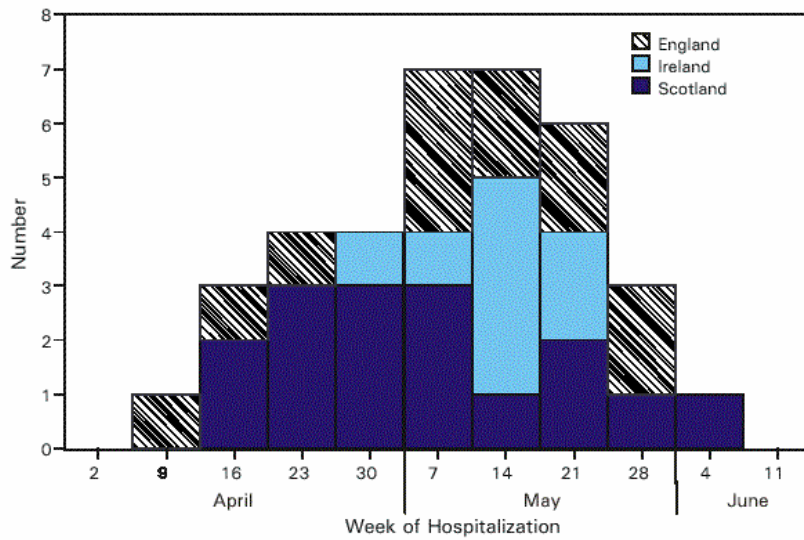






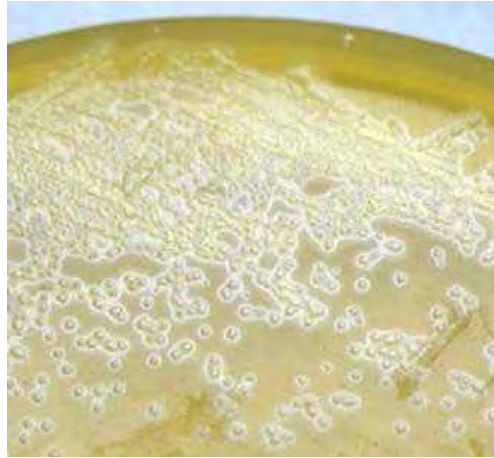


FIGURE 1. Cases of unexplained severe illness and death among injecting drug users — Scotland, Ireland, and England, April–June 2000



MMWR juin 2000

**80 cellulites nécrosantes
et fasciites nécrosantes
UK
(45% de mortalité)**



***Clostridium
novyi***

Strepto A

- **Epidémies de cellulites** (Bohlen...EID 200, salvado...ICCAC 2004)
- **12 % des infections invasives à StreptoA aux US** (O'brien...cid 2002)
- **34 % en GB en 2003** (engler...com dis public health 2004)



Necrotizing Fasciitis Caused by Community-Associated Methicillin-Resistant Staphylococcus aureus in Los Angeles

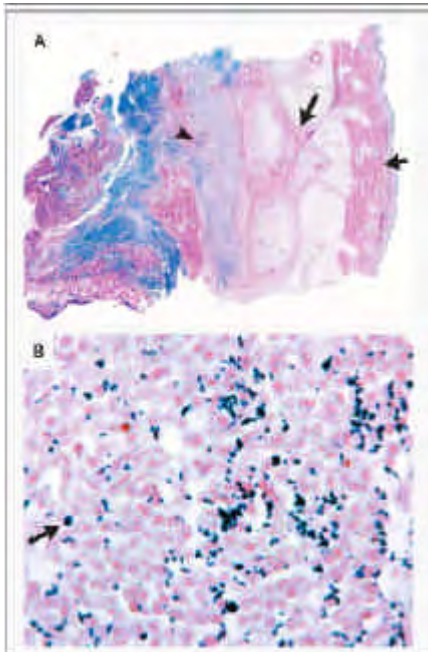
Miller...nejm 2005; 352: 1445-53

Table 1. Characteristics of the Patients.*

Patient No.	Age	Sex	Ethnic Group	Duration of Illness before Hospitalization	Duration of Symptoms before Hospitalization	Existing Conditions	No. of Surgical Procedures during Hospitalization	Home Visit	Site of Infection	MSSA Bacteremia	Comments
1	28	M	W	11	118	Alcohol abuse	1	No	Left side of back	No	Thrombocytopenia; elevated liver enzymes; DNA of predominant skin graft sequenced
2	41	F	W	9	8	Hepatitis C, chronic kidney disease	1	Yes	Right buttock, arm, and abdominal wall	No	
3	28	F	W	7	4	Diabetes mellitus	3	No	Right side of groin, right thigh	No	
4	46	M	W	20	1		1	No	Left shoulder	Yes	
5	35	M	B	23	5	HIV/AIDS	4	No	Left buttock, left thigh	No	Skin graft sequenced
6	59	M	W	1	1	None	2	No	Right shoulder	MD	Skin graft sequenced
7	40	M	W	10	1	None	1	No	Right side of neck to axilla	MD	
8	46	M	W	54	116	DNA hyperplasia	6	No	Left ankle and flank	Yes	Skin graft sequenced; community-associated
9	46	M	W	9	3	IDU, severe chronic depression, history of cutaneous abscesses	1	No	Left upper arm	No	
10	47	M	W	14	1	Chronic renal failure, severe chronic osteomyelitis	1	No	Right posterior side of neck and chest	No	Methicillin resistance also isolated from wound; sequenced
11	18	F	B	4	3	None	3	No	Multiple lesions on left leg	No	
12	46	F	W	2	7	Hepatitis C, severe chronic IDU	1	No	Left arm	No	
13	46	M	W	2	5	None (pathologic fracture of humerus after intravenous drug abuse)	1	No	Right side of groin	MD	
14	48	M	W	11	21	Hypertension, IDU, prior bacterial meningitis, diabetes	1	Yes	Left buttock	MD	

*M denotes male; W and female; DM, diabetes mellitus; IDU, intravenous drug use; HIV/AIDS, human immunodeficiency virus infection and acquired immunodeficiency syndrome; MD, not done; CAD, coronary artery disease; and MRSA, methicillin-resistant Staphylococcus aureus.

†Race in ethnic group not available.

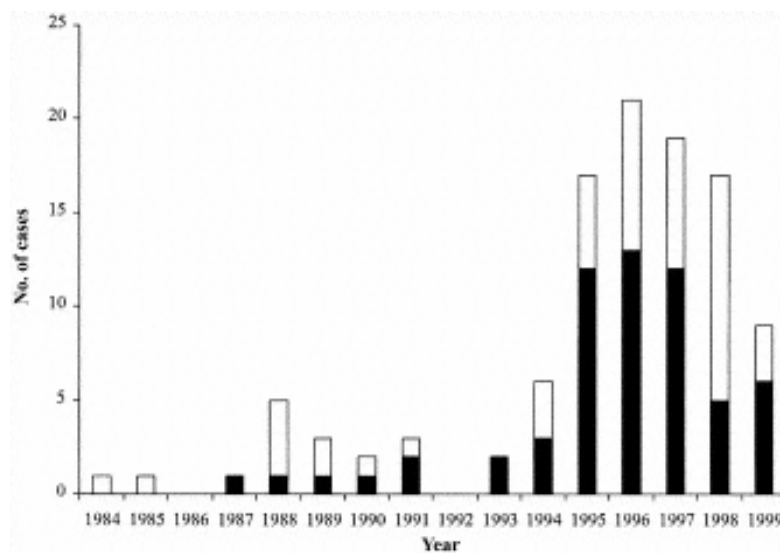


PVL
Mec A

Clone ST8
(USA 300)



Fasciites nécrosantes)



Chen ...CID 2001

Nécroses











Faux anévrysmes et anévrisme mycotique

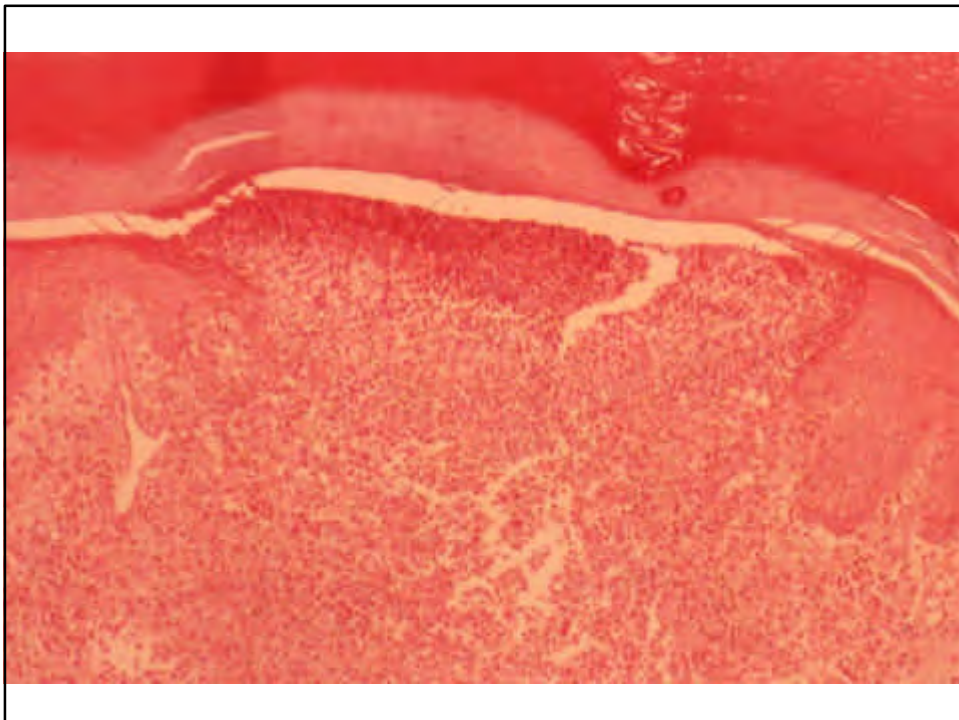
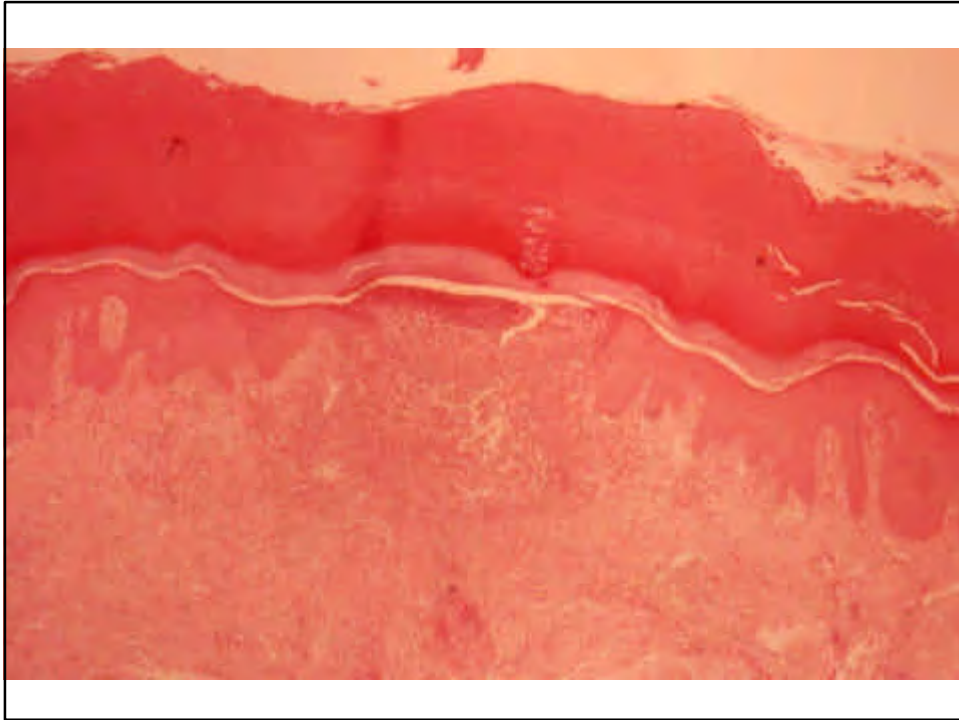


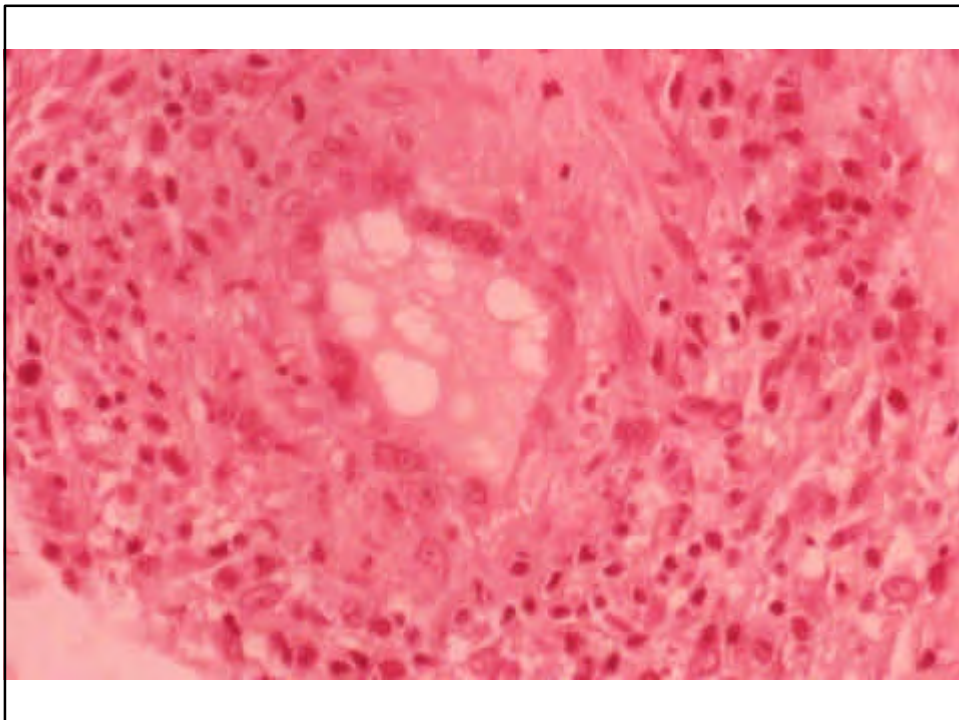
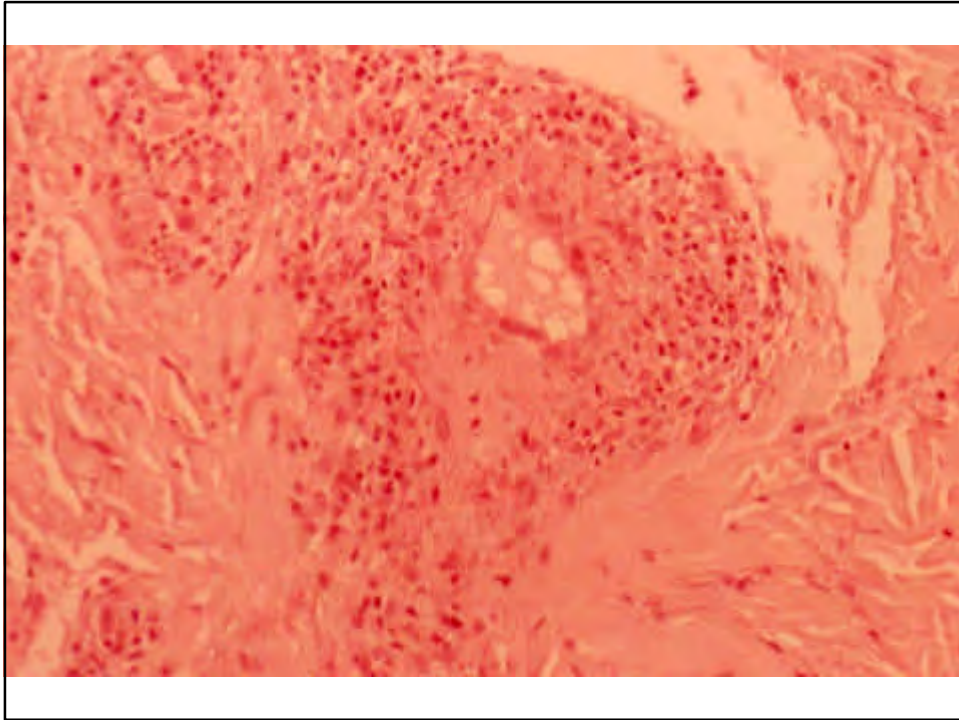
Phlébites

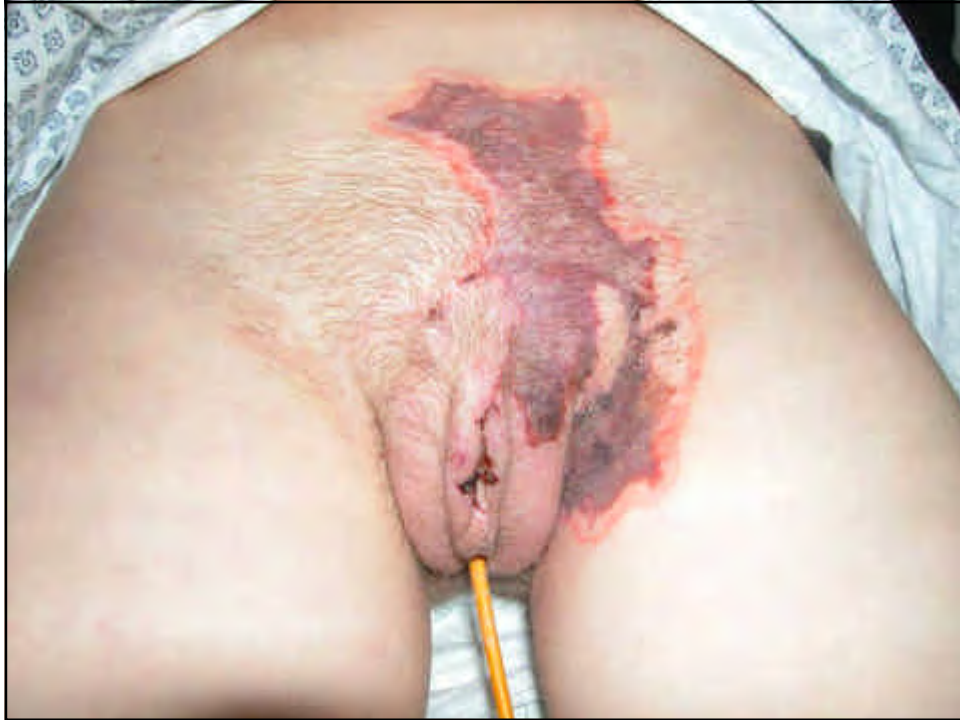






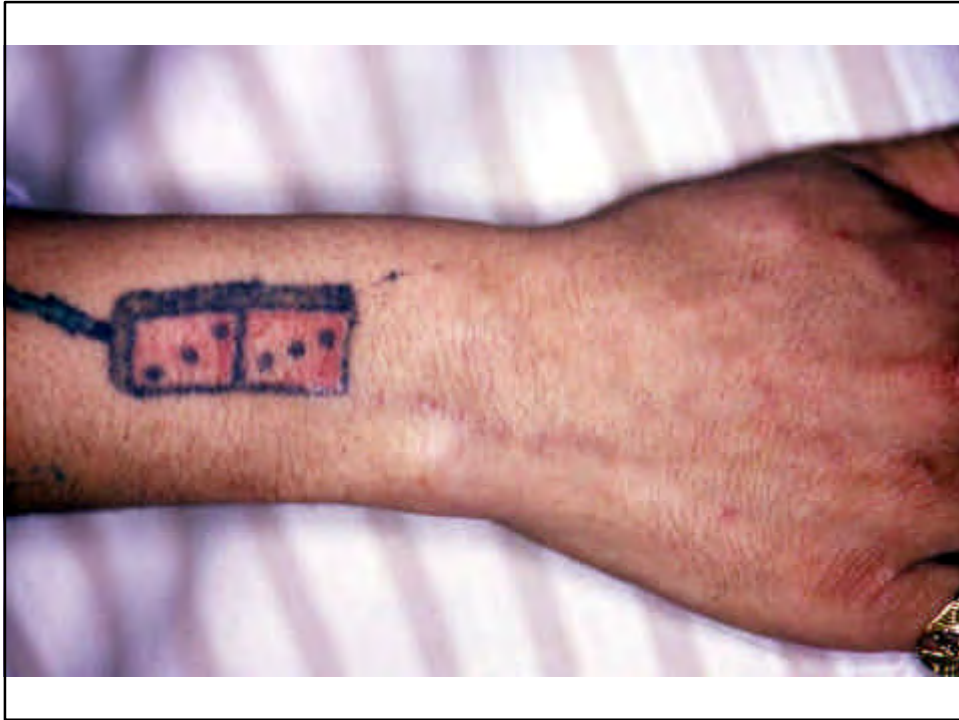






2. Les complications chroniques





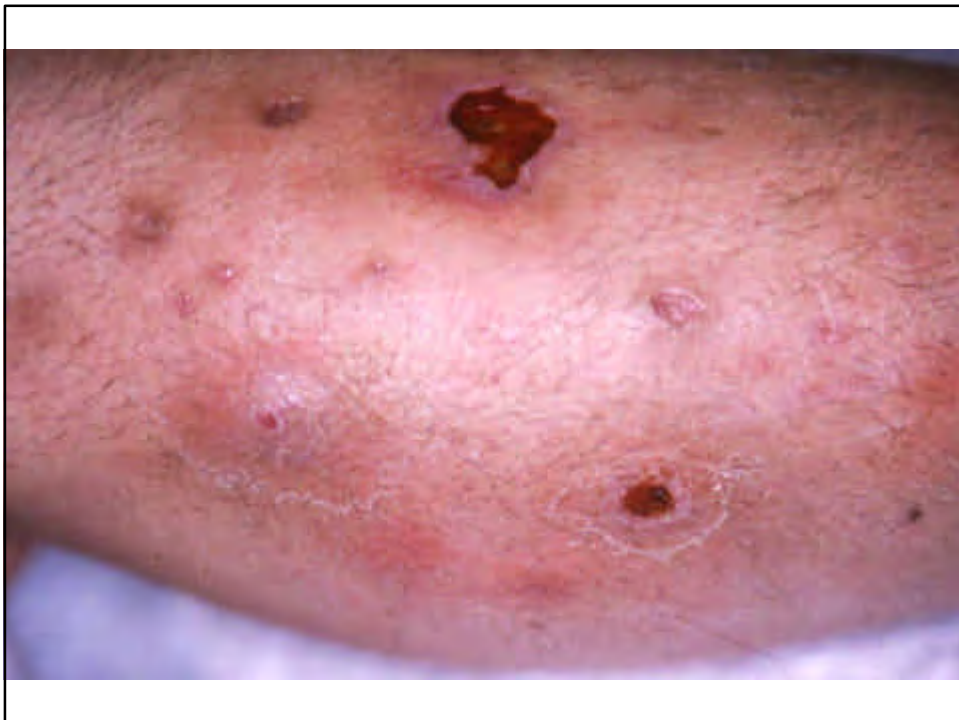














N Engl J Med





- Œdème des membres,
- acrosyndrome («Syndrome de Raynaud»)
- «Puffy hand syndrome»









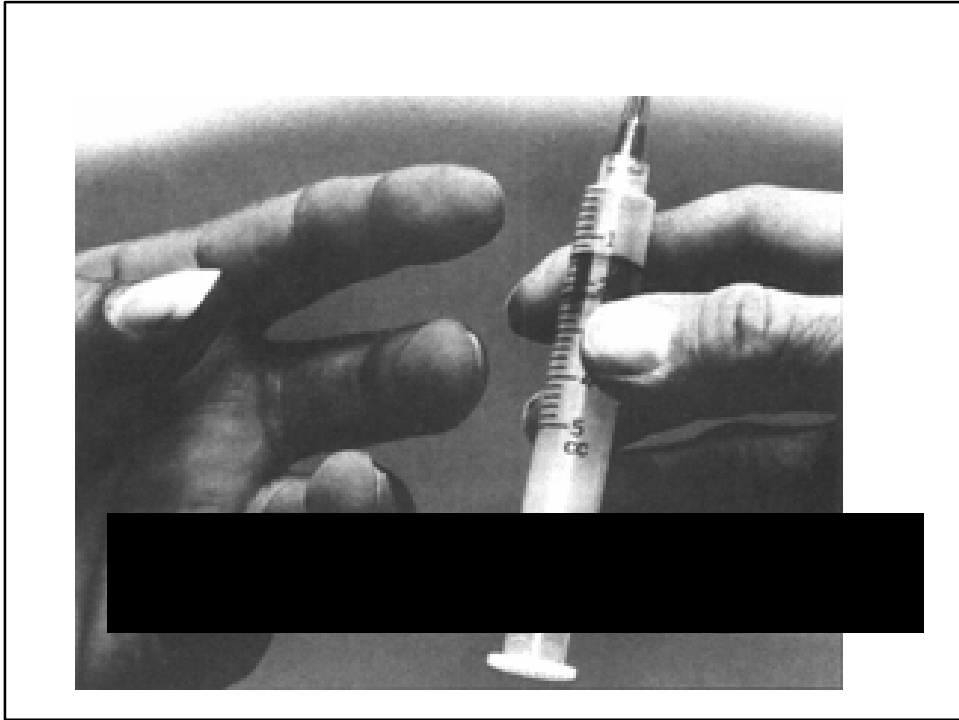


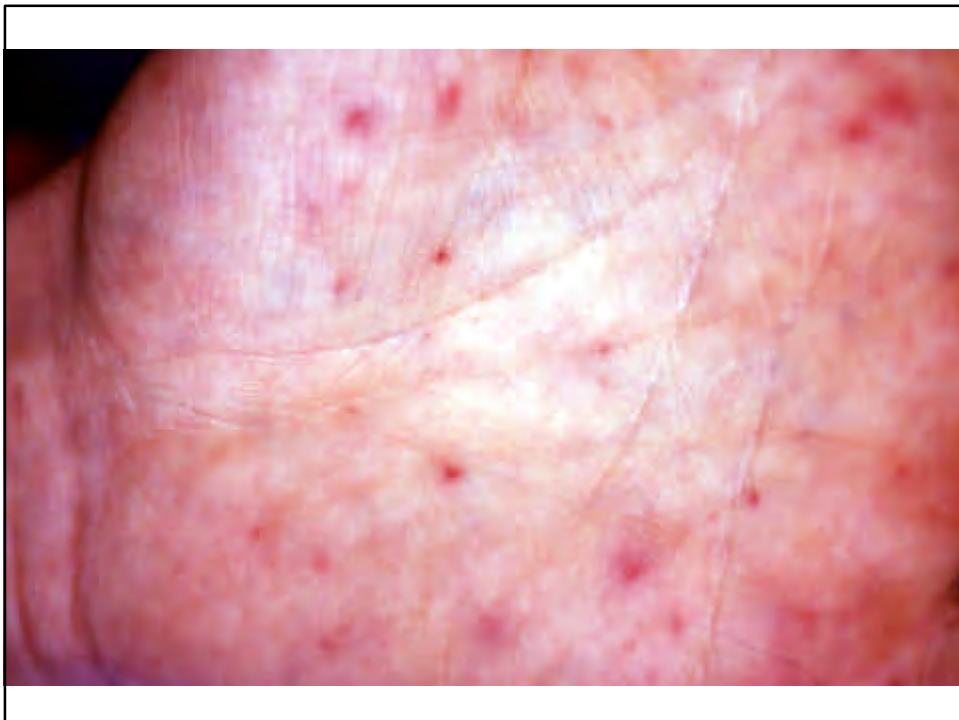


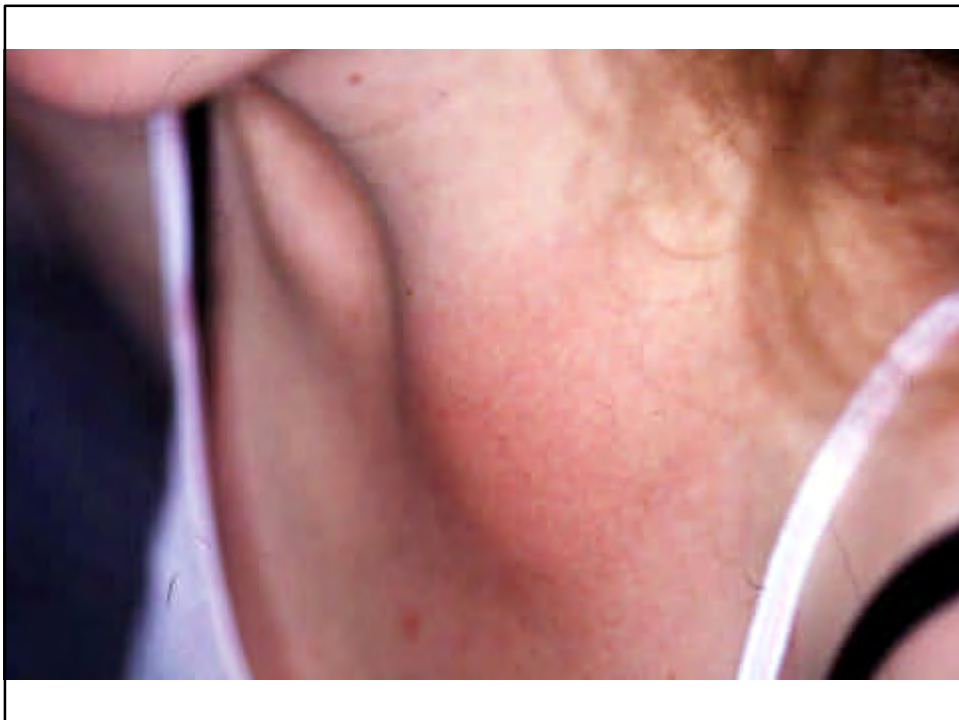


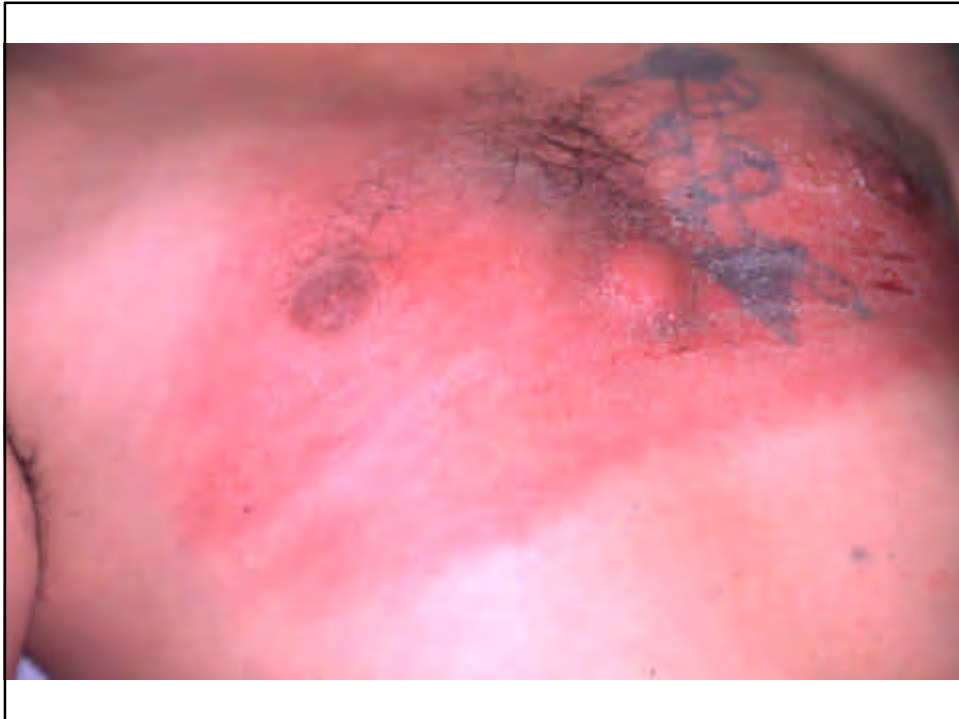


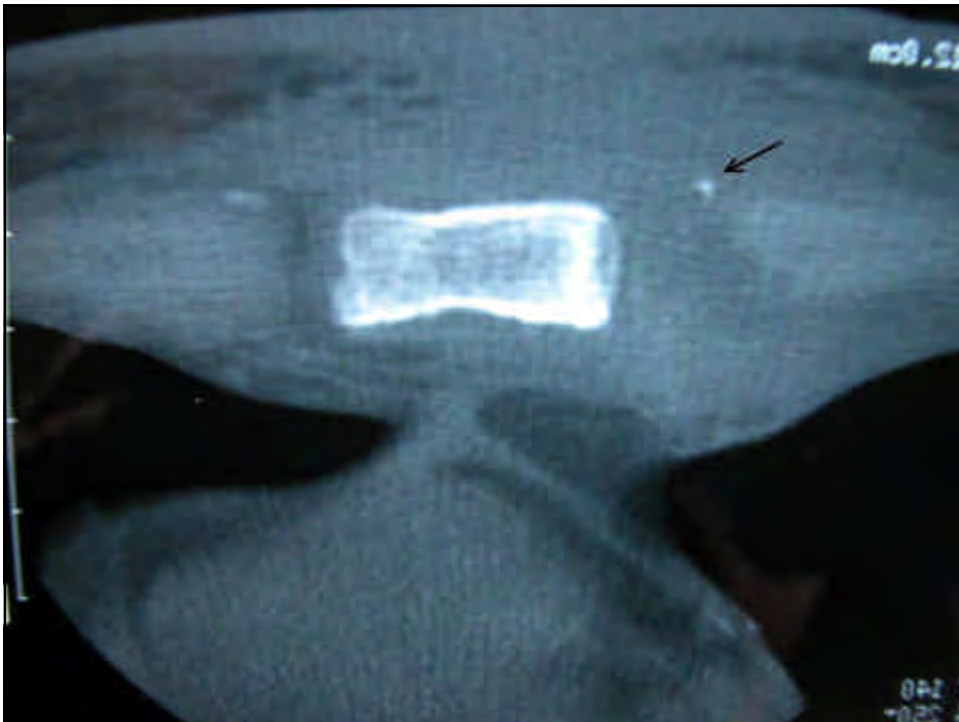
3. Réactions d'hypersensibilité

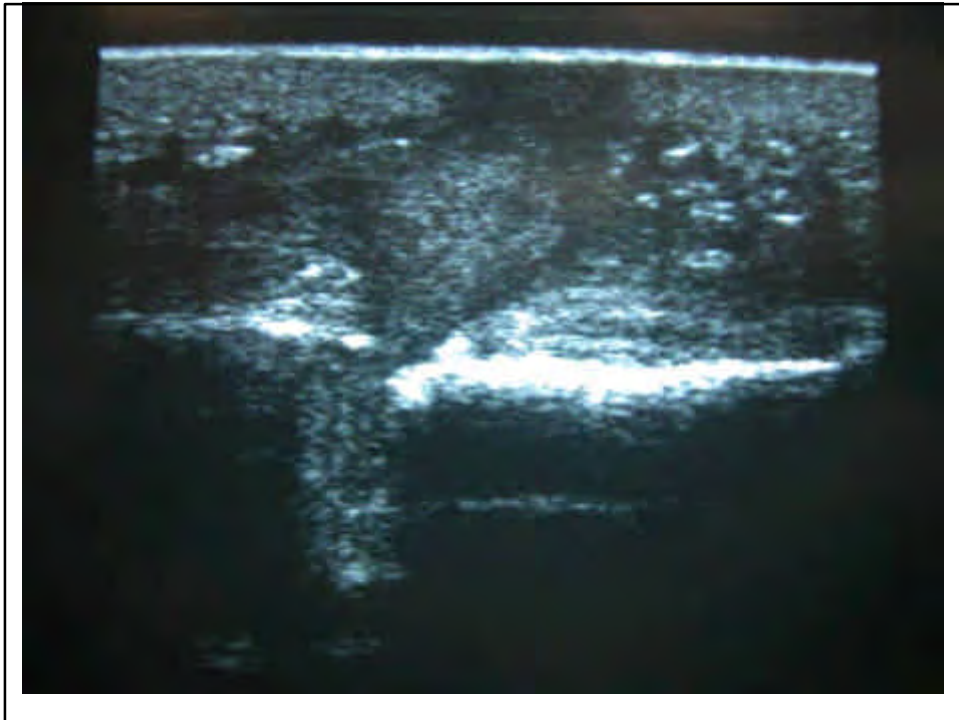












5. Infections toxiniques



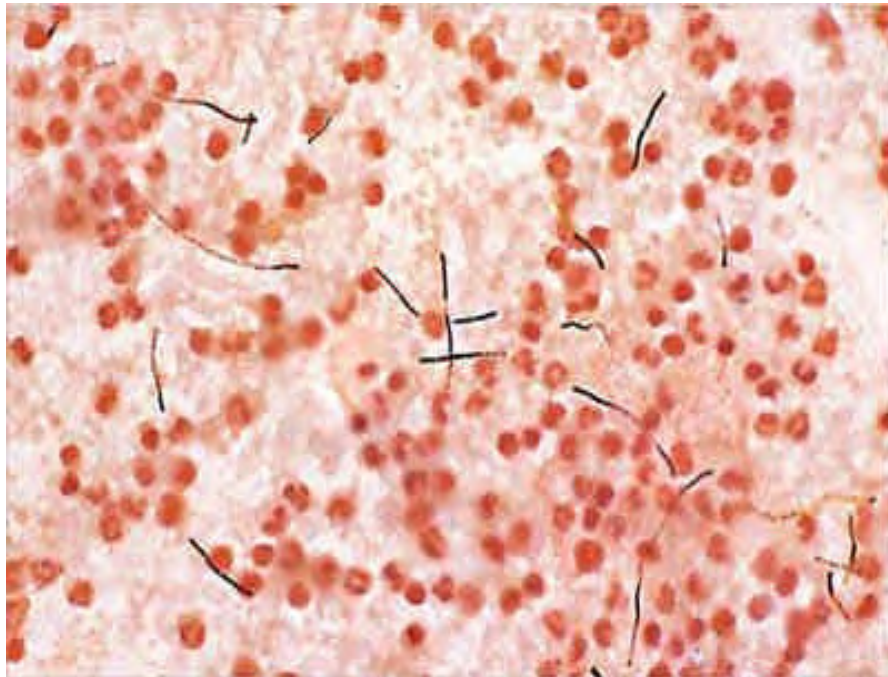
(CNN)

Botulisme



Jensenius lancet 2000

- Passaro DJ
Wound botulism associated with black tar heroin among injecting drug users. *JAMA* 1998; 18: 859-63.
- Werner SB
Wound botulism in California, 1951-1998: recent epidemic in heroin injectors. *Clin Infect Dis* 2000; 31: 1018-24.
- Mulleague L
Wound botulism in drug addicts in the United Kingdom. *Anaesthesia* 2001 ; 56 : 120-3.





Remerciements:

**Collègues des services d 'Infectiologie
(Nice):
les drs Bernard, Cua, Dellamonica,
Mondain, Roger, Durant**

**Drs V. Blanc et Deswardt (Antibes)
Dr Lacour (Dermatologie Nice)**

**Collègues chirurgiens de l 'Hôpital
de Fréjus Saint-Raphael**