



JNI 15^{es} Journées
Nationales
d'Infectiologie

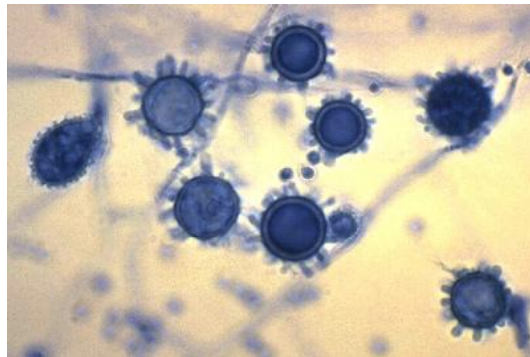
Bordeaux
et l'interrégion Aquitaine & Limousin



du mercredi 11 au vendredi 13 juin 2014
Palais des Congrès de Bordeaux

Histoplasmosse disséminée associée au VIH dans l'ouest guyanais : étude rétrospective sur 10 ans.

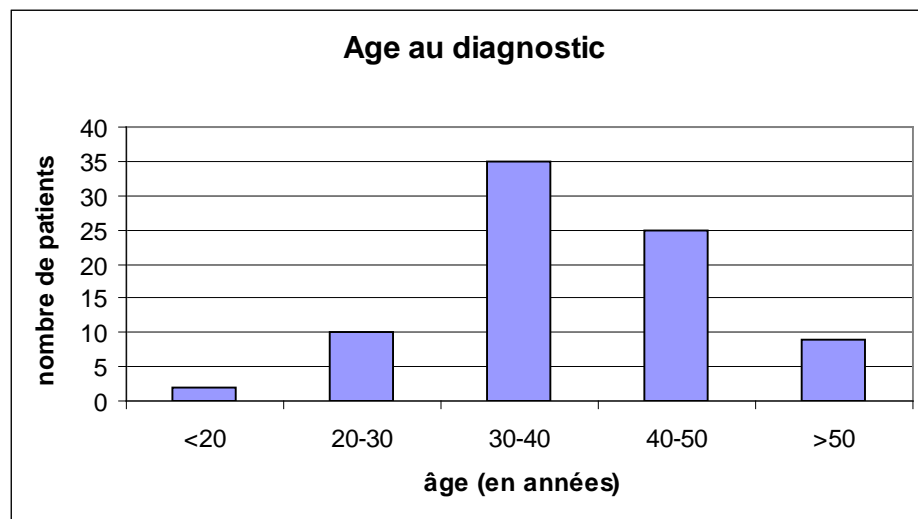
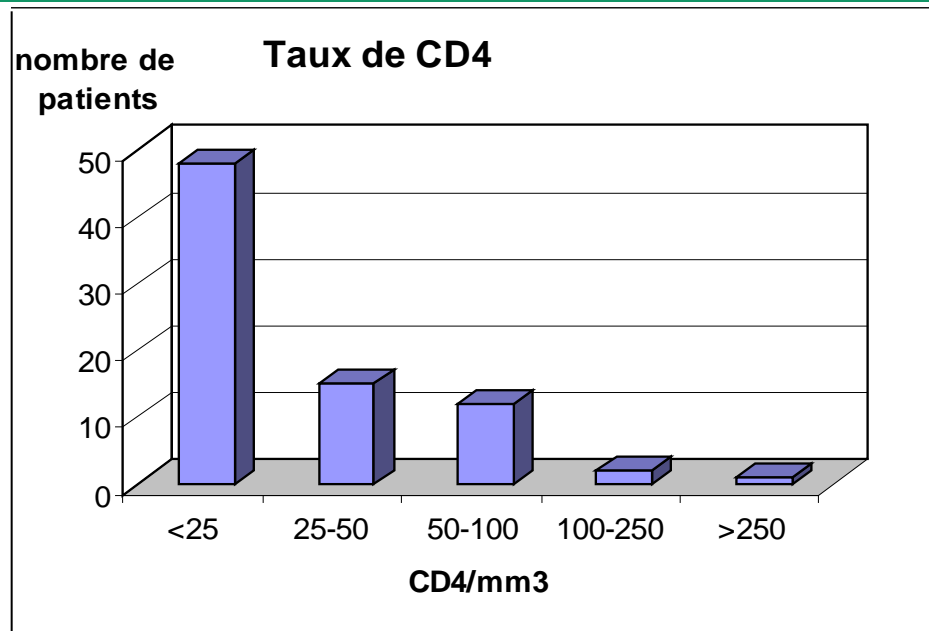
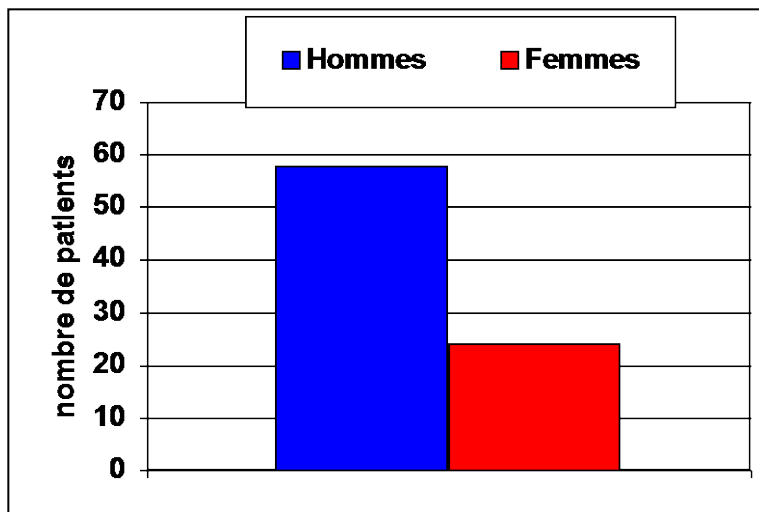
A Putot, S Perrin, A Jolivet, V Vantilcke.



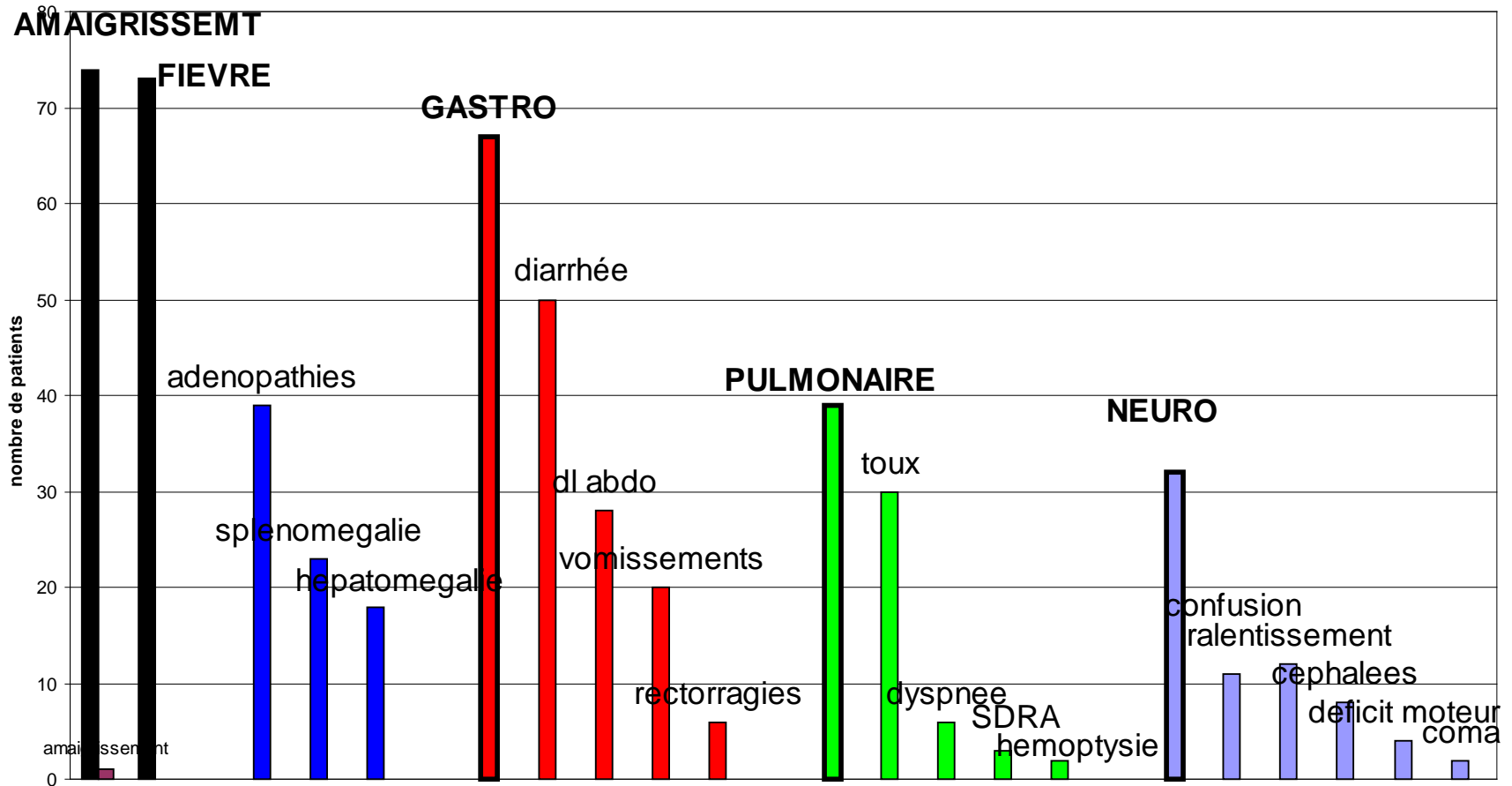
15^{es} JNI, Bordeaux
du 11 au 13 juin 2014

Histoplasmose disséminée : population étudiée

- Étude rétrospective monocentrique
- sur 82 patients (avec preuve microbiologique)
- St Laurent du Maroni, Guyane,
- Mai 2002 – Mai 2012



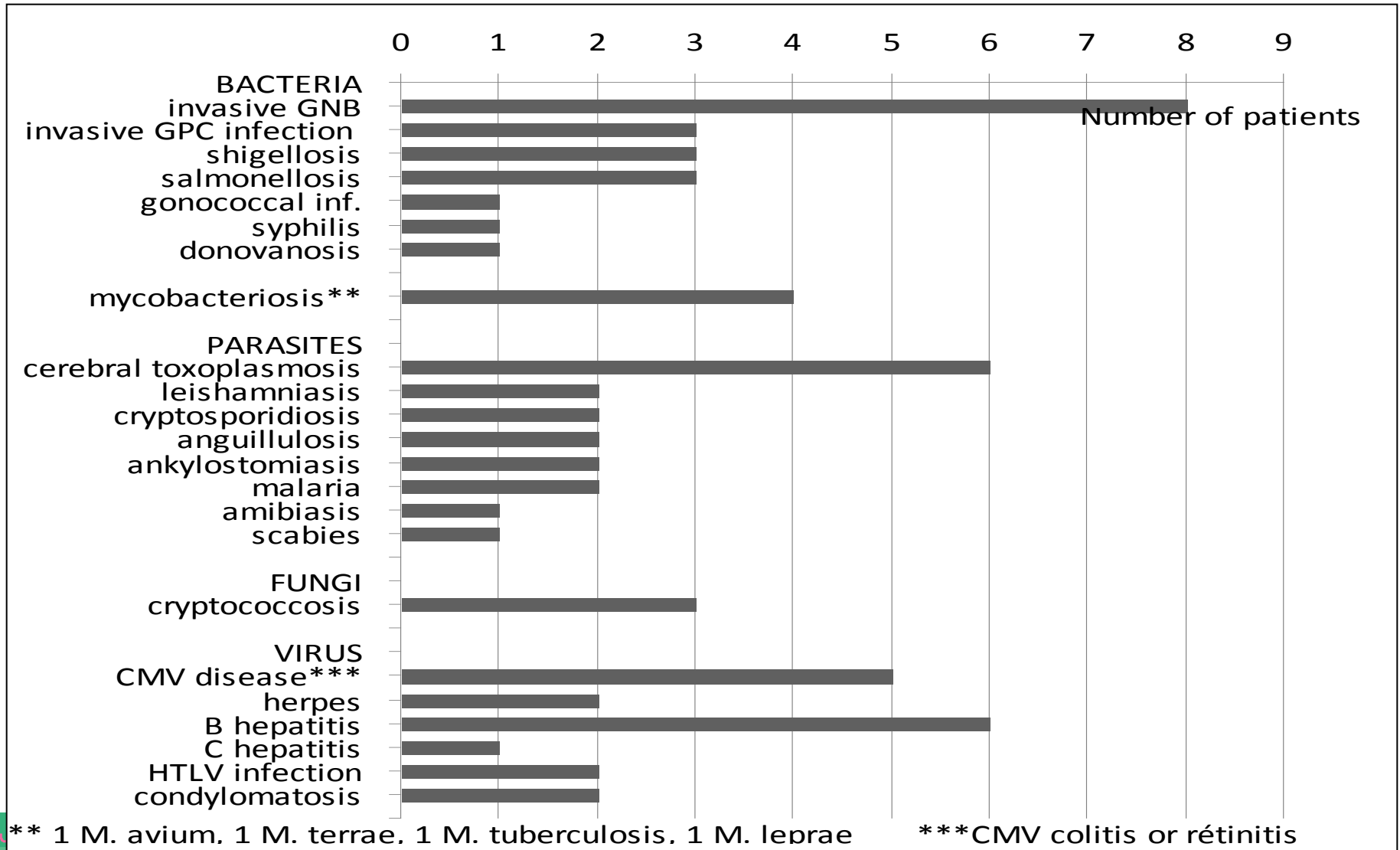
Histoplasmose disséminée : présentation clinique



Histoplasmose disséminée : Localisations

	documented locations:	presumptive locations:
Bone marrow	Bone marrow involvement (43)	
Digestive tract	Colitis (12) Ileitis (2) Gastritis duodenal ulcers rectitis peritonitis	acalculous cholecystitis (3) pancreatitis (3)
Respiratory Tract	Bronchopneumonia (2)	Pleuritis (3) Pericarditis
ENT	palet ulcers (2) unilateral angina	parotiditis otitis nostril ulcer sinusitis
Neurological system	Meningitis (2) Histoplasmoma	
Other	hepatitis (21) lymphadenopathy (5) dermatitis psoas abscess	legs ulcers (2) pyelonephritis prostatitis

Histoplasmose disséminée : Coinfections



Facteurs associés à la mortalité à un an

	Dead (n=17)		Survivors (n=51)		P
	n (%)	Median [IQ25-IQ75]	n(%)	Median [IQ25-IQ75]	
Patients characteristics					
Sex (Male)	13 (76.5%)		35 (68.6%)		0.609
Age (year)		41[37-48]		30 [36-41]	0.007
Clinical parameters at admission					
Temperature (°C)		39 [38.8-39.2]		39 [38.3-39.3]	0.821
Weight (kg)		54[43-56]		54 [46.0-59.5]	0.512
Weight loss (kg)		14.0 [10.0-19.0]		10.5 [7.7-14.2]	0.151
Delay before admission (days)		60 [21-90]		45 [15-75]	0.399
Respiratory symptoms	12 (81.0%)		25 (51.0%)		0.047
Neurological symptoms	8 (47.0%)		18 (35.2%)		0.320
Digestive symptoms	16 (94.1%)		42 (82.3%)		0.172
Paraclinical parameters at admission					
Positive direct examination	10 (58.8%)		34 (66.7%)		0.558
CD4 rate (/mm3)		3 [8-39]		16 [6.5-33]	0.611
Platelets (giga/L)		60 [22-121]		139 [67-223]	0.015
Hemoglobine (g/dL)		6.2 [5.1-6.8]		7.6 [6.7-9.0]	0.0005
Neutrophils (/mm3)		1208 [231-2130]		949 [609-2299]	0.745
LDH (UI/L)		521 [230-941]		328 [260-569]	0.358
Ferritine (ng/ml)		3559 [2211-20000]		3504 [1657-9316]	0.777
Creatinine(mmol/ml)		117 [84-191]		80 [67-98]	0.038
Coinfections					
All	13 (76.4%)		24 (51.1%)		0.069
Digestive	6 (35.3%)		13 (27.7%)		
Pulmonary	1 (5.9%)		2 (4.3%)		
Neurological	5 (29.4%)		3 (6.4%)		
Septicemia	4 (23.5%)		5 (10.6%)		
Opportunistic	5 (29.4%)		15 (31.9%)		